

Demonstration of South Africa's National Environmental Screening Tool

Webinar
21 August 2018

Presenters from DEA:

Dee Fischer, Marlanie Moodley, Zakariyyaa Oumar, Deon Marais

Moderator from IAIA:

Bridget John (bridget@iaia.org)



environmental affairs

Department:
Environmental Affairs
REPUBLIC OF SOUTH AFRICA

IAIA
International Association
for Impact Assessment

IAIA Webinars

- Guidelines on Business and KBAs: Managing Risk to **Biodiversity**
- Empowering **Indigenous Voices** in Impact Assessment
- Lost in Time: The Black Hole Between **ESIA Completion and Project Implementation**
- Understanding Impacts on Vulnerable Populations through **Psycho-Social Impact Assessment**
- **Health** Considerations in Impact Assessment
- **Resettlement** and Impact Assessment – Points of Intersection
- *And several more...*

Visit <http://www.iaia.org/webinars.php>

@IAInetwork

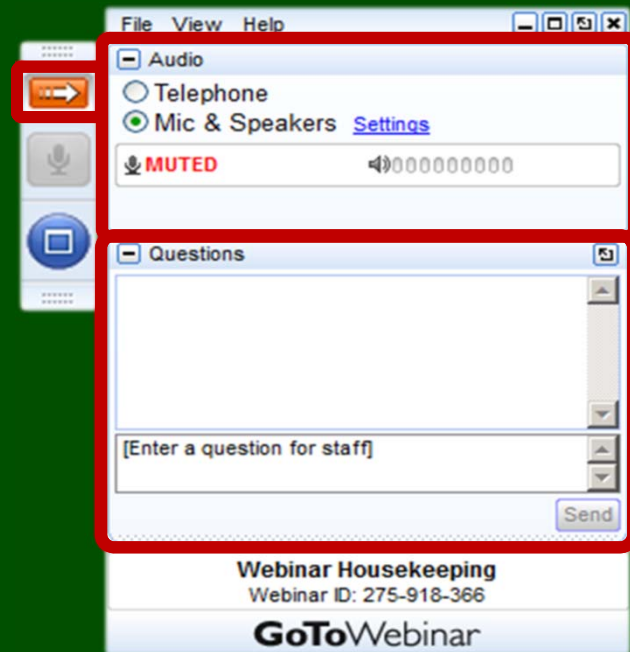
#iaiawebinar

Housekeeping

Recording? ✓

Questions? ✓

Slides available? ✓





Environmental
Advisory Services

The National Web-based Environmental Screening Tool Webinar

21 August 2018

Dee Fischer, Marlanie Moodley, Zakariyyaa Oumar, Deon Marais



environmental affairs

Department:
Environmental Affairs
REPUBLIC OF SOUTH AFRICA



esri



What is the Screening Tool?

- **The National Web based Environmental Screening Tool** is a **geospatial web-enabled** application providing for **screening of sites for environmental sensitivity** and the **placement of proposed developments** in relation to the **impact avoidance hierarchy**.
- It produces the **report** required in terms of regulation 16(1)(v) of the EIA regulations
- **Any person** can use the screening tool at **any time** and use it as an **anonymous user**

Objectives of the screening tool

- The **National Development Plan** calls for an efficient and effective **environmental** legislative process **including the Environmental Impact Assessment process**
- The development of the **National Web based Environmental Screening Tool** forms part of **ensuring ongoing improvement of the EIA process to ensure efficiency and effectiveness**
- The Screening Tool aims to **flag areas of potential environmental sensitivity** in relation to a proposed **site** and development **footprint**
- **The tool enables** the applicant to manipulate the development footprint on a site to **avoid environmental sensitivities**
- **The report generates** a **list of specialist assessments** that should form part of the assessment reports to be submitted **with the EIA application** based on the national sector classification and the sensitivity of the site
- Supports the implementation of the **Assessment Protocols**
- Assessment Protocols provide **minimum information** to be included in a **specialist report** to facilitate the decision making process
- **The tool identifies** any specific **exclusions, restriction, prohibitions or any exceptions to the EIA process** that apply to a particular site as well as any specific information that must be consulted in relation to that site
- In time to provide a mechanism to collect **new environmental information** surveyed or compiled by the specialists through the preparation of assessment reports for verification by data custodians for **incorporation** into relevant national data sets.

URL

(Uniform Resource Locator)

<https://screening.environment.gov.za/screeningtool>

<https://screening.environment.gov.za/screeningtool/index.html#/pages/welcome>

Screening Tool assistance:

screening@environment.gov.za

EIA Process Queries:

EIAadmin@environment.gov.za

Questions?



- Mr. Deon Marais, GIS Practitioner
- Ms. Dee Fischer, Chief Director for Integrated Environmental Management Support
- Mrs. Marlanie Moodley, Director for GIS
- Mr. Zakariyyaa Oumar, Chief GIS Professional, Enterprise Geospatial Section



environmental affairs

Department:
Environmental Affairs
REPUBLIC OF SOUTH AFRICA

IAIA
International Association
for Impact Assessment